



GAT MONTHLY MEMBERSHIP PROGRESS REPORT

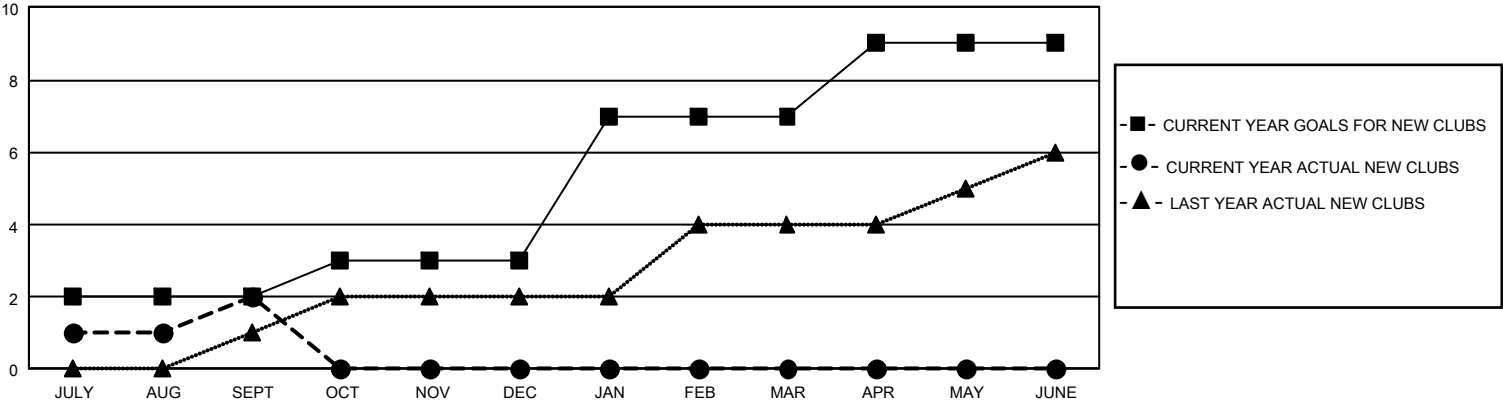
Results as of: 9/30/2025

GMT Constitutional Area 5 - J, Group G

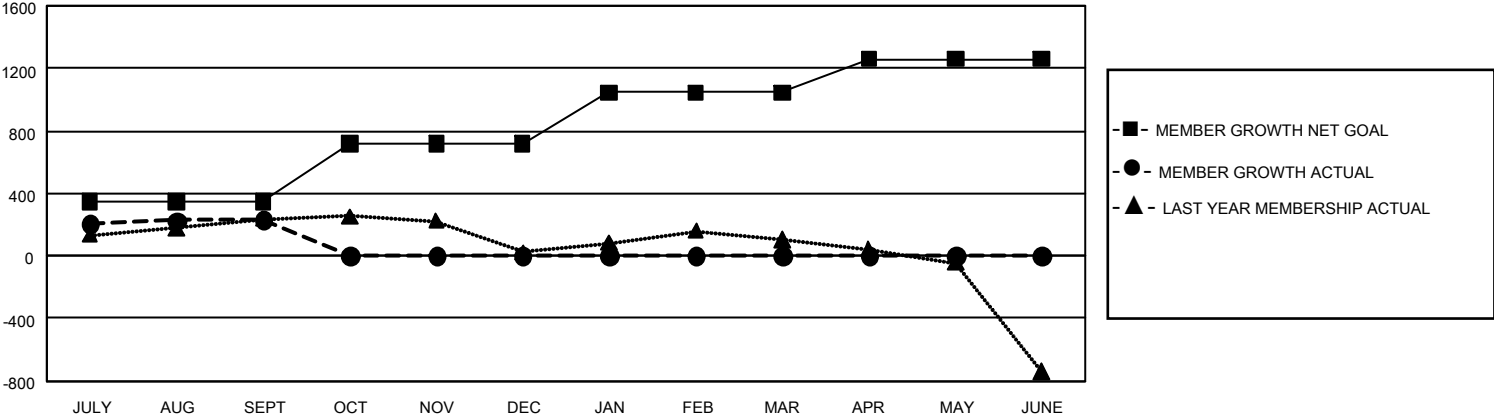
REPORT DOES NOT INCLUDE CLUBS IN UNDISTRICTED AREAS.

Clubs				Members			
RESULTS FOR 2025-2026				RESULTS FOR 2025-2026			
QUARTER	NEW CLUB GOAL	NEW CLUBS	DROPPED CLUBS	QUARTER	MEMBER GROWTH NET GOAL	MEMBER GROWTH ACTUAL	DROPPED MEMBERS ACTUAL (including transfers)
JULY/AUG/SEPT	6	2	1	JULY/AUG/SEPT	350	603	300
OCT/NOV/DEC	3	0	0	OCT/NOV/DEC	370	0	0
JAN/FEB/MAR	12	0	0	JAN/FEB/MAR	325	0	0
APR/MAY/JUNE	6	0	0	APR/MAY/JUNE	215	0	0

GOALS AND ACTUAL NEW CLUBS CUMULATIVE



GOALS AND ACTUAL MEMBERS CUMULATIVE



DROPPED CLUBS: 1		215 CLUBS OF 556 ADDED 1 OR MORE NEW MEMBERS	<u>GENDER DISTRIBUTION</u>	
<u>DROPPED MEMBERS</u> DECEASED 23 CLUB CANCELLED 0 OTHER 275 <hr/> TOTAL 298			MALE	11,891 (79.97%)
			FEMALE	2,974 (20.00%)
			NON BINARY	1 (0.01%)
			PREFER NOT TO ANSWER	4 (0.03%)
		CLICK HERE FOR CUMULATIVE MEMBERSHIP DATA	TOTAL FAMILY UNIT MEMBERS	2,925
			FAMILY MEMBERS PAYING HALF DUES	1,646